

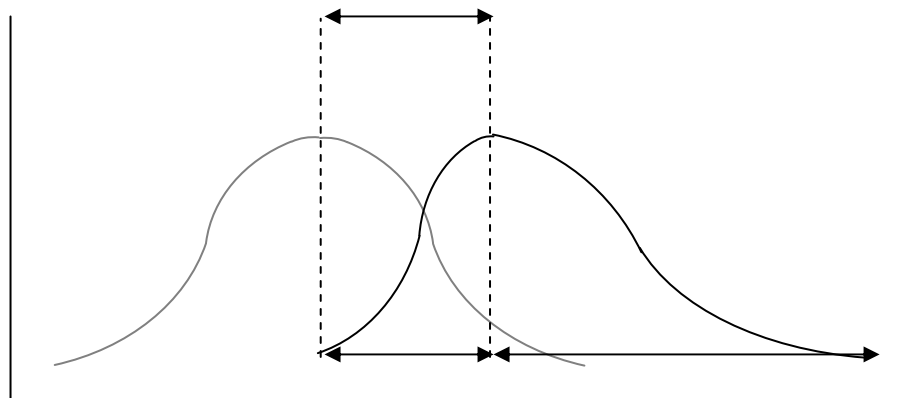
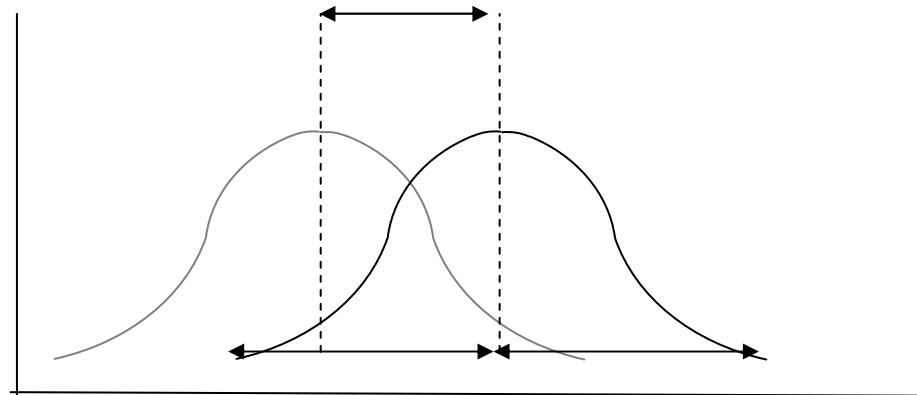


# Assessment for Learning

Leadership Series Conference  
Royal Festival Hall



# Entitlement, Equity and Excellence



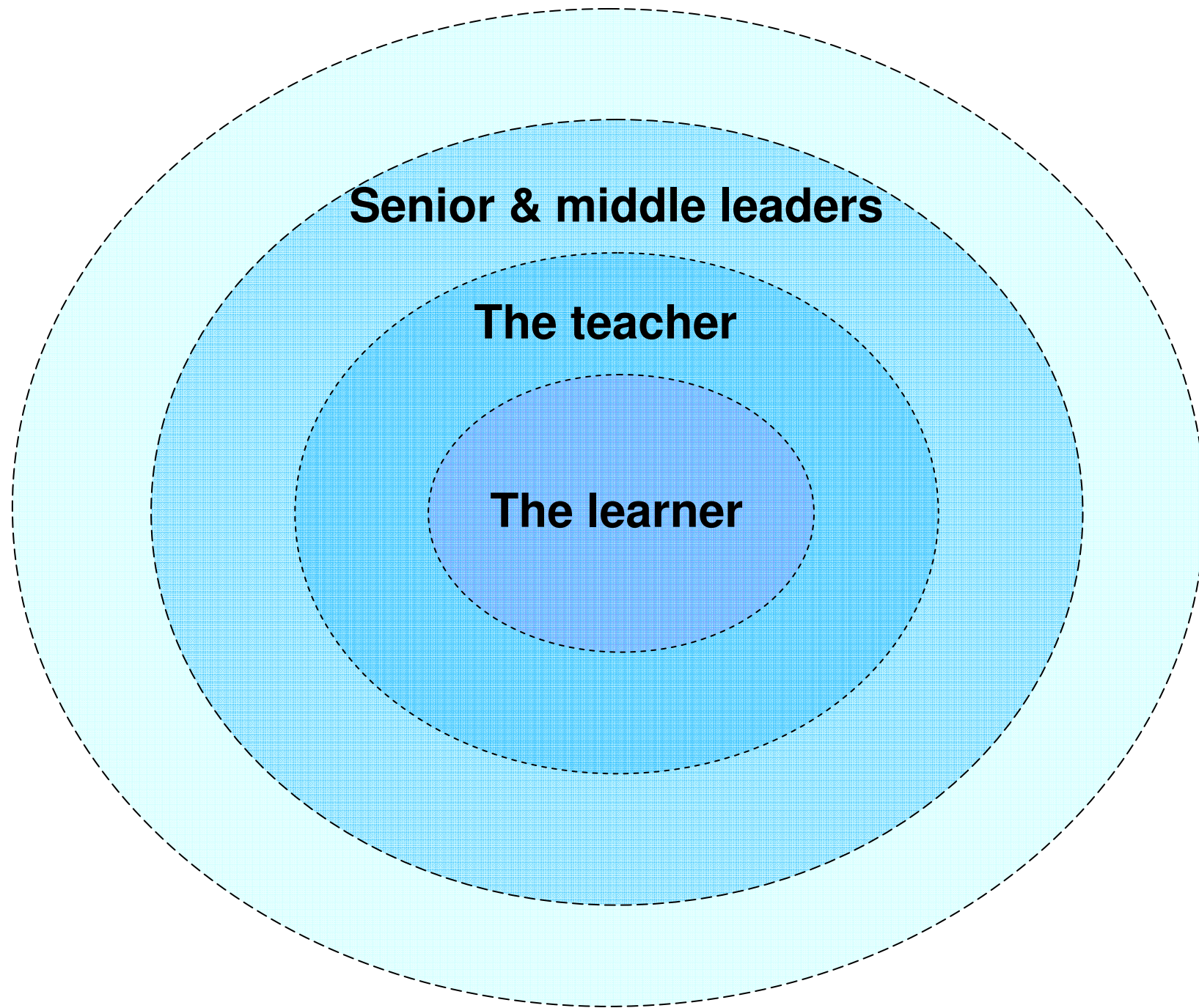
## *The 'waves' model of personalisation*



***Wave 1***    ***High quality whole class teaching***

***Wave 2***    ***Wave 1 + intervention support programmes***

***Wave 3***    ***Wave 2 + increasingly individualised programmes***



**Senior & middle leaders**

**The teacher**

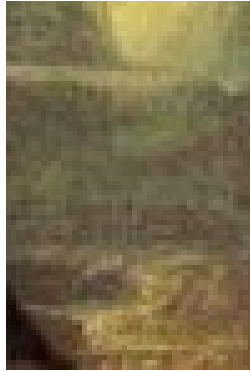
**The learner**



**The National Strategies**  
Secondary

Practical strategies to support the whole-school development of AfL with APP (Secondary)

department for children, schools and families



**Close up**

**Day-  
to-day**



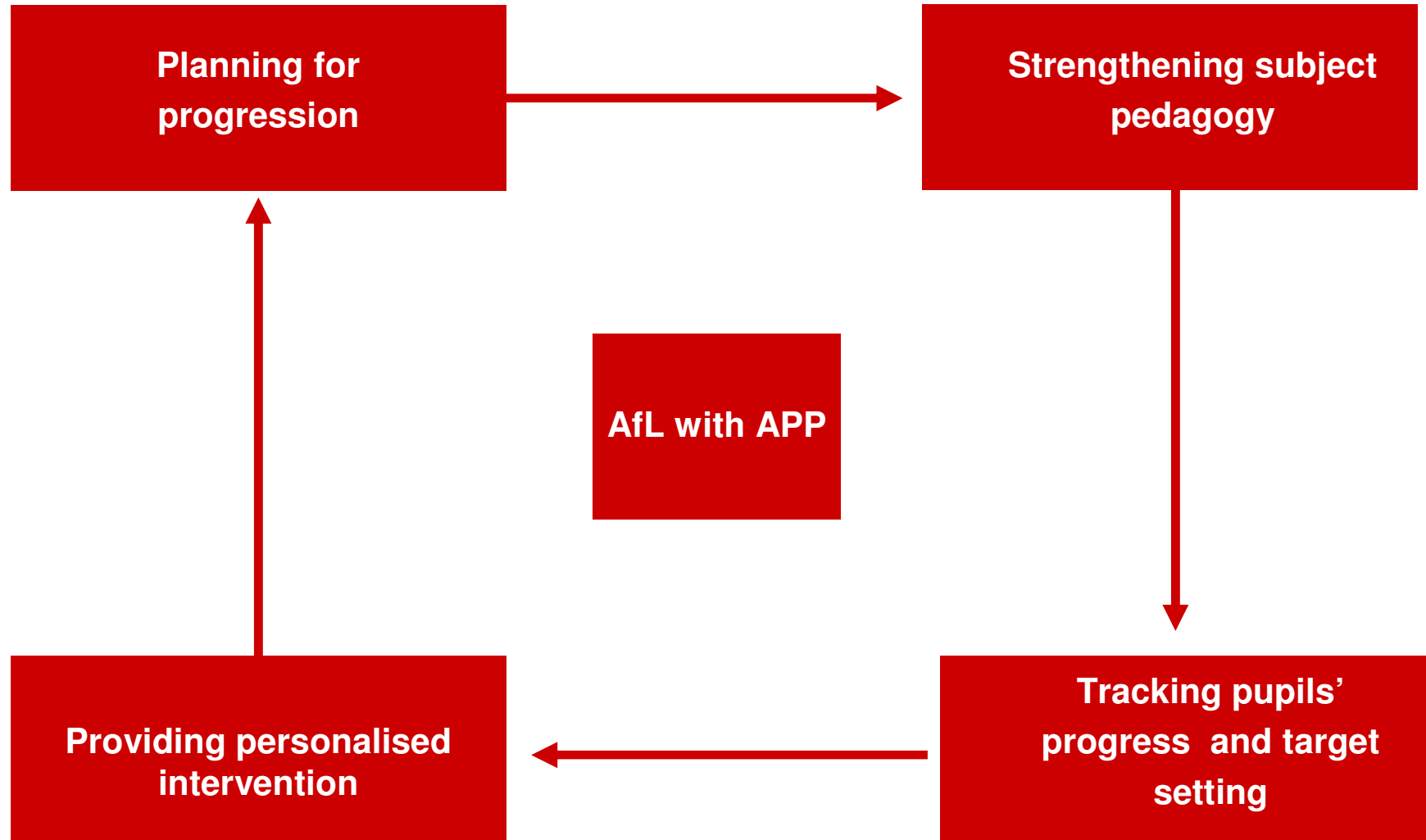
**Standing back**

**Periodic**



**Public view**

**Transitional**



## Crown copyright



- The content of this publication may be reproduced for non-commercial research, education or training purposes provided that the material is acknowledged as Crown copyright, the publication title is specified, it is reproduced accurately and not used in a misleading context.
- For any other use of this material please apply to OPSI for a Click-Use, PSI Licence, or by writing to:

Office of Public Sector Information  
Information Policy Team  
National Archives  
Kew  
Richmond  
Surrey  
TW9 4DU

Email: [licensing@opsi.gov.uk](mailto:licensing@opsi.gov.uk)

Web: [www.opsi.gov.uk/click-use/index.htm](http://www.opsi.gov.uk/click-use/index.htm)

- The permission to reproduce Crown copyright protected material does not extend to any material in this publication which is identified as being the copyright of a third party, or to Royal Arms and other departmental or agency logos, nor does it include the right to copy any photographic or moving images of children or adults in a way that removes the image or footage from its original context.